



SEALING

SikaHyflex[®]-250 Facade

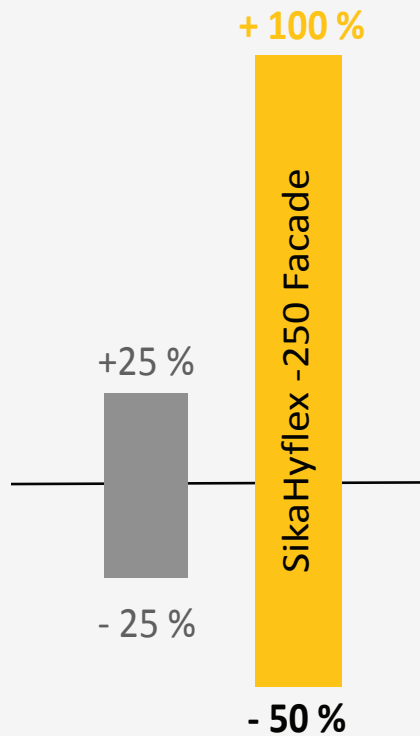
HIGH PERFORMANCE WEATHERPROOFING SEALANT FOR FACADES

BUILDING TRUST

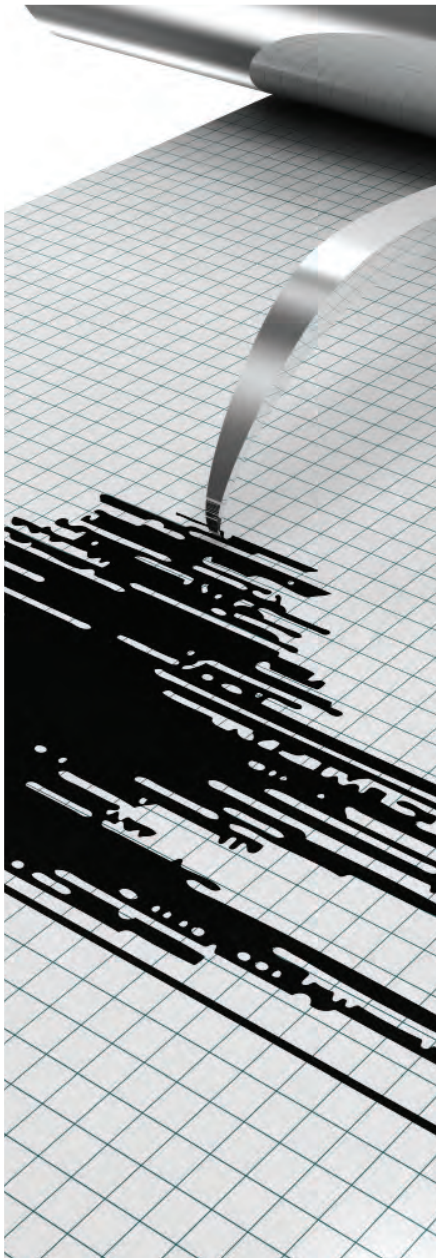
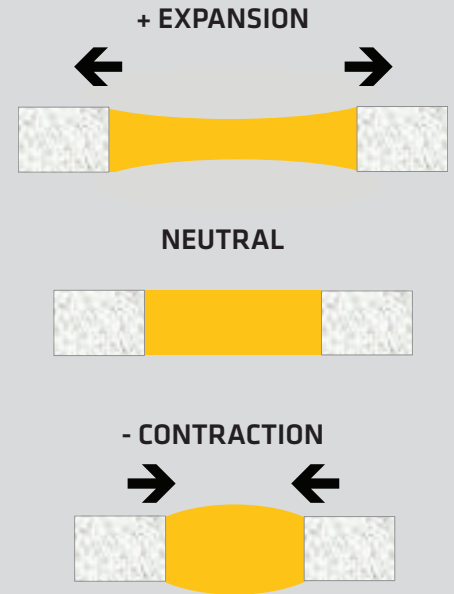


The **New Zealand Building Code** (E2/AS1) requires sealants to accommodate expansion up to 25% and contraction down to 25%.

New **SikaHyflex-250 Façade** accommodates +100% expansion, -50% contraction.



TYPICAL JOINT MOVEMENT



THE NEW HIGH PERFORMANCE WEATHERPROOFING SEALANT

- High movement capability; +100% expansion, -50% contraction
- High tear resistance
- Excellent performance during seismic events

SIKAHYFLEX®-250 FAÇADE

Joint dimensions in building façades can be subject to significant changes due to thermal expansion and contraction. Even average day and night temperatures can result in measureable changes to façade joints.

These movements by the concrete, masonry, glass or metal in a building façade must be accommodated by the façade sealant in order to protect the building. If the façade fails, weather proofing problems will soon follow.

In most areas of New Zealand, consideration also needs to be given to possible future seismic activity that will put even greater stress on façade joints.

SikaHyflex®-250 Façade is a 1-part, moisture curing, elastic joint sealant. It is an extremely flexible, low modulus, durable sealant able to absorb significant movements and avoid high forces on joint edges, therefore ensuring long lasting, weathertight façade joints.

EXCELLENT ADHESION

TO MOST BUILDING SUBSTRATES:

- Concrete façades
- Masonry façades
- EIFS & ETICS façades*
- Parapets of balconies and galleries and as well as many other constructions.

*Exterior Insulation & Finishing Systems (EIFS)
/ External Thermal Insulation Composite Systems (ETICS)

GLOBAL APPROVALS

MOVEMENT CAPABILITY

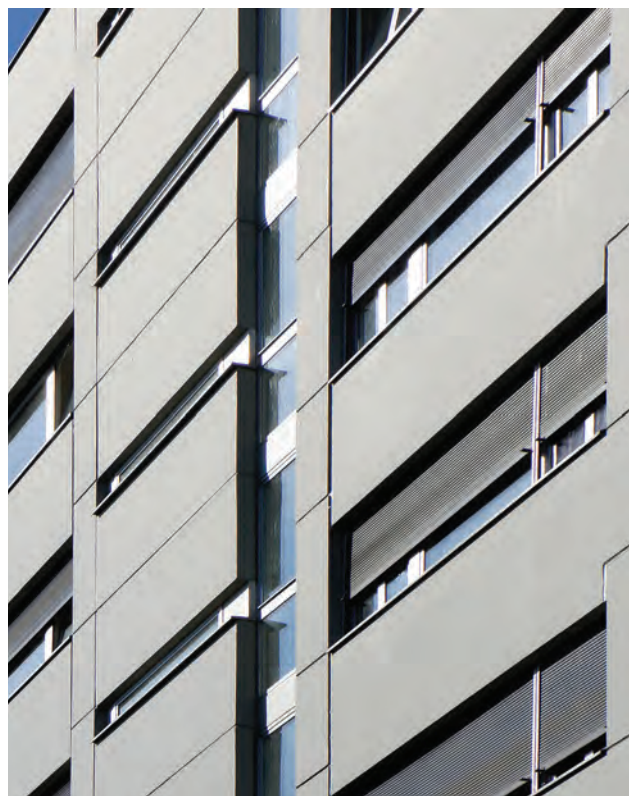
- ASTM C920, class 100/50
- ISO 11600 F 25 LM
- EN15651-1, class 25 LM

NON STAINING

- ISO 16938-1 non staining on marble
- ASTM C 1248 non staining on marble

ENVIRONMENTAL

- EMICODE EC 1PLUS R, very low emission
- Passes LEED EQc 4.1



SPECIFY WITH CONFIDENCE AND PEACE OF MIND

FEATURES

- Excellent performance during a seismic event
- High movement capability and high tear resistance
- Excellent weathering and UV resistance
- Excellent adhesion to most building substrates
- Preferred by Contractors. "Easy to use". Very easy to extrude, very good workability, easy to smooth, absolutely non sag
- Can be over painted
- Conforms to all leading standards
- Solvent free
- Excellent weathering and ageing resistance
- Energy saving

BENEFITS

- Building integrity maintained – no sealant splitting or tearing
- Less pressure on the substrate so less damage to the substrate
- Long term durability and service life
- One sealant for all applications. No risk of incompatibility
- Faster application so faster completion. Higher standard of workmanship
- Unlimited design options compared to silicones
- Uniform product quality. Specify with confidence
- No disturbing odours from solvents or any Ingredients
- Lower maintenance costs
- Saves heating & cooling costs due to long lasting, tight joints in building envelopes



SikaHyflex®-250 Façade uses Sika's i-Cure® technology.

Manufactured using Sika's breakthrough, moisture-curing technology; an odour free, non-toxic, non-corrosive sealant with excellent workability and durability.



SikaHyflex[®]-250 Facade

Product Information	
Packaging	600 ml foil pack, 20 foil packs per box
Shelf life	15 months (storage between +5 °C and +25 °C)
Colours	White, concrete grey, black
Sag flow	0 mm (ISO 7390)
Movement capability	+100/-50% (ASTM C719) +/-25% (ISO 9047)
Elongation at break	800% (ISO 37)
Application temperature	+5° and +40 °C
Surface Preparation	Sika[®] Aktivator-205 for powder coatings and metals, e.g. aluminium, steel Flash off time: min. 15 minutes Sika[®] Primer-3 N for porous substrates, e.g. concrete, mortar, masonry, plaster Flash off time: min. 30 minutes Sika[®] Primer-215 for PVC and mortar in window connection joints Flash off time: min. 30 minutes Primers are only adhesion promoters. They are not substitutes for cleaning the surface nor can they improve the strength of the substrate significantly. For further information see Pre-treatment chart Sealing & Bonding. Pre-treatment may be skipped if dry, dust and oil free, high quality substrate.

FOR MORE SikaHyflex[®]-250 Facade INFORMATION:



Scan QR Code for
Video, Data Sheet
& SDS

WHO WE ARE

Sika AG, Switzerland, is a globally active specialty chemicals company. Sika supplies the building and construction industry as well as manufacturing industries (automotive, bus, truck, rail, solar and wind power plants, façades). Sika is a leader in processing materials used in sealing, bonding, damping, reinforcing and protecting loadbearing structures. Sika's product lines feature high quality concrete admixtures, specialty mortars, sealants and adhesives, damping and reinforcing materials, structural strengthening systems, industrial flooring as well as roofing and waterproofing systems.

Our most current General Sales Conditions shall apply.
Please consult the Data Sheet prior to any use and processing.



Browse our Buildings at www.emporis.com

SIKA (NZ) LTD
PO BOX 19192
Avondale, Auckland
1746, New Zealand

Contact
Phone 0800 745 269
Fax 0800 745 232
www.sika.co.nz

BUILDING TRUST

